

collection
2023



Company's Catalog
of doors filled with HPL panels

VIKONDA
windows and doors

Interactive Door Configuration Manager



Scan and follow the link to the Configuration **Manager for Doors with MASKO** panels. The catalog demonstrates only a part of the available models and door filling options.

We are moving ahead! We work and update data taking into account market challenges and global trends. We make changes and expand opportunities.

In the Configuration Manager, you can learn all the news and developments regarding MASKO panels. It is practical and forward-thinking.

Contents:

Interactive Door Configuration Manager.....	2
Doors: stylish, reliable and modern.....	5
How to choose doors with HPL panels?.....	6
Anatomy of a door with HPL filling	7
Technical constraints	9
The main advantages of doors with HPL panels.....	10
Perfect facade	11
Design Series: Lines	12
Laconic design	14
Design Series: Vertical	15
Stylish interior with HPL panels	17
Design Series: Horizontal	19
Series of designs: Radius.....	21
Design Series: Square	22
Classic designs	24
Design Series: Classic	25
Series: Basic (without INOX).....	26
Glass in filling. Lamination	28
Easy in use: door sills and closers	30
Available accessories	32
Quality is first and foremost! Contact details.....	41

New
vision
of your
living
space



*Security
& beauty*

Doors: stylish, reliable and modern

door fillings based
on HPL panels

The use of laminated panels made of high pressure laminate material (HPL) makes it possible to transform ordinary metal plastic doors into a real masterpiece. The innovative technology enables maintaining all the advantages of PVC structures and greatly enhancing design opportunities.

HPL filling looks perfect while their configuration and color can be selected according to the design of the facade or interior. Moreover, using HPL filling enables maintaining such important door properties as energy efficiency, reliability and protection against burglary.

We present a line of modern PVC
doors including three options:

Termo COMFORT

Termo PREMIUM

Termo EXCLUSIVE



How to choose doors with HPL panels?

various configurations for various needs

Entrance doors that do not require design solutions but must meet high criteria for energy efficiency, safety and comfort.

These are doors of designs series without glass and/or INOX. Having all the advantages, such doors enable saving money on design elements. The natural choice for a laconic facade similar to the other back entrance door of the apartment.

Entrance doors with INOX, glass units and component parts to maximum.

The entrance door of a private country house is the hallmark for its owners. The tasks of the entrance doors group are the following: energy saving, security and appearance solution. HPL technology enables maintaining the advantages of the warm entrance doors group and provide a unique solutions for any architectural design.

The doors for auxiliary and technical rooms.

The option of the Basic Series in white color is budget-oriented and ideal for technical room doors (at the junctions between residential and non-residential premises). The task of doors in such places is to preserve heat and perform excellent operational qualities.

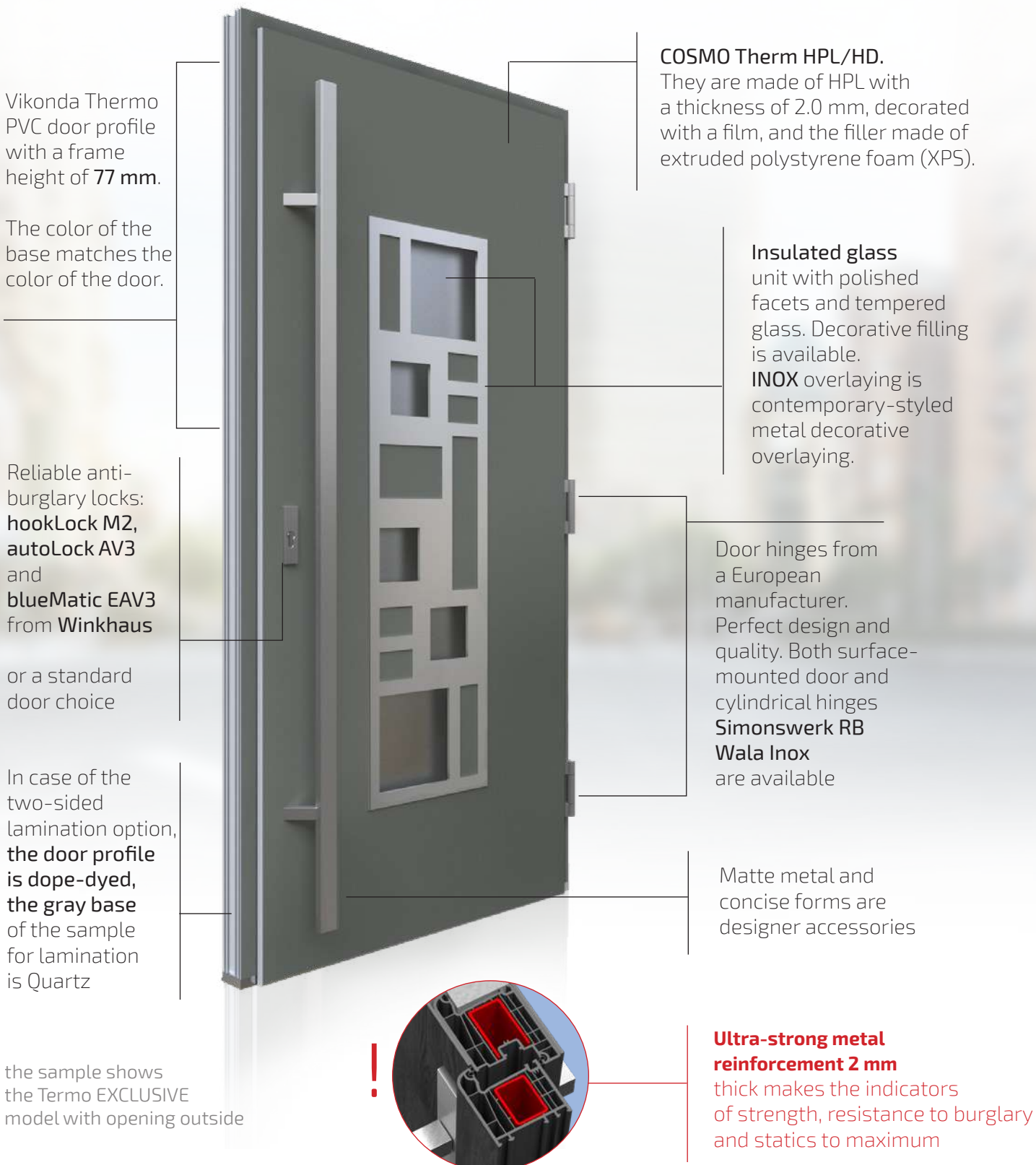


The anatomy of doors:

the details of perfect component parts

Vikonda Company offers three options of up-to-date doors with innovative HPL-filling based on Vikonda Thermo profile system:

Termo COMFORT Termo PREMIUM Termo EXCLUSIVE



Vikonda Thermo PVC door profile with a frame height of **77 mm**.

The color of the base matches the color of the door.

Reliable anti-burglary locks: **hookLock M2, autoLock AV3** and **blueMatic EAV3** from **Winkhaus**

or a standard door choice

In case of the two-sided lamination option, **the door profile is dope-dyed, the gray base** of the sample for lamination is Quartz

the sample shows the Termo EXCLUSIVE model with opening outside

COSMO Therm HPL/HD. They are made of HPL with a thickness of 2.0 mm, decorated with a film, and the filler made of extruded polystyrene foam (XPS).

Insulated glass unit with polished facets and tempered glass. Decorative filling is available. **INOX** overlaying is contemporary-styled metal decorative overlaying.

Door hinges from a European manufacturer. Perfect design and quality. Both surface-mounted door and cylindrical hinges **Simonswerk RB Wala Inox** are available

Matte metal and concise forms are designer accessories

Ultra-strong metal reinforcement 2 mm thick makes the indicators of strength, resistance to burglary and statics to maximum



Termo COMFORT

Termo PREMIUM

Termo EXCLUSIVE

filling
thickness

40 mm

54 mm

76 mm

standard
sill

20 mm

20 mm

20 mm

handle

Medos: Handle DUBLIN 35
+ Handle DUBLIN 35

Medos: Handle DUBLIN 35
+ Pull handle DUBLIN 35

Medos: Handle DUBLIN 35
+ Pull handle PR

door hinges

Wala Inox stainless.
Surface-mounted

Simonswerk RB Inox
stainless. Cylindrical

Simonswerk RB Inox
stainless. Cylindrical

locks*

hookLock M2, autoLock
AV3, blueMatic EAV3

hookLock M2, autoLock
AV3, blueMatic EAV3

hookLock M2, autoLock
AV3, blueMatic EAV3

reinf

2 mm

2 mm

2 mm

security
level

up to RC 2

up to RC 2

up to RC 2

type
of door
filling

The HPL panel under moulding fillets

The HPL panel is placed inside the T or Z leaf, glued into it and fixed with moulding fillets from the inside of the room. At that, the profile of the door structure remains visible.

The HPL panel with single-sided shield

The HPL panel is glued to the Z leaf from the outside making the profile invisible completely. The appearance of the door is more perfect and concise as only the laminated panel is visible. The profile of the door structure remains visible from the inside

The HPL panel with two- sided shield

The HPL panel is glued to the Z leaf both from the outside and from the inside. This ensures a natural combination of doors with both the facade and the interior and makes them as energy efficient and attractive as possible.

Technical restrictions and peculiarities of the appearance

for different types of filling with HPL panels

Peculiarities of the appearance:

Termo COMFORT
profile is visible both from
the inside and outside
of the room

Termo PREMIUM
panel makes the door profile
invisible from the outside

Termo EXCLUSIVE
panel makes the door profile
invisible from both sides —
a perfect door design

view from
the inside
of the room



view from
the outside
of the room

Technical restrictions on the door frame depending on the type of HPL panel shield:

Termo COMFORT
1000x2350 mm

Termo PREMIUM
1000x2215 mm*

Termo EXCLUSIVE
1000x2215 mm*

* for models from the Horizontal
design series (or for other models
with horizontal elements across the
entire leaf), it is possible to increase
the permissible height to 2350 mm
due to the extension of the panel
(that is, there will be a joint under
the horizontal design feature)

Termo COMFORT/
PREMIUM



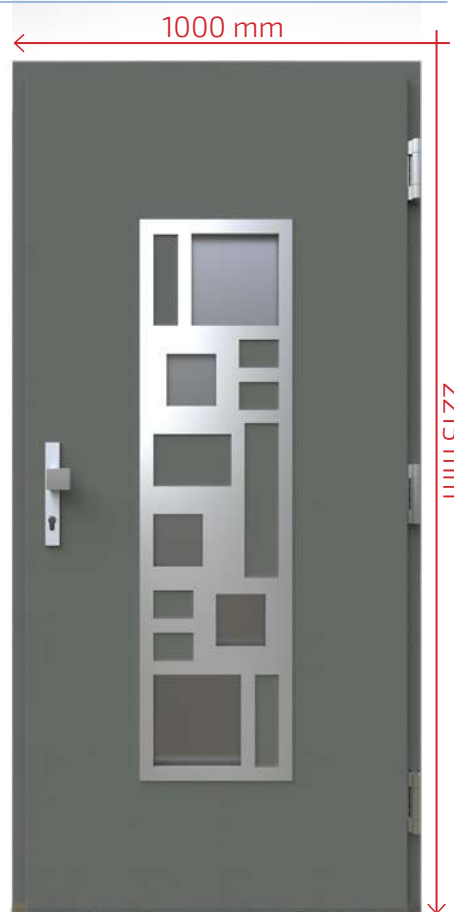
Termo EXCLUSIVE



Termo COMFORT



Termo EXCLUSIVE/
PREMIUM



The main advantages of the technology

door design features for large-format structures

Functionality

Design components ensure the stability of the structure. The frame that secures the door to the wall and the leaf that moves each time when opened or closed. Door filling is a decorative element on which the appearance of the structure mainly depends. However, MACKO door panels not only look good, they significantly improve the functionality of the entrance door.

Energy efficiency

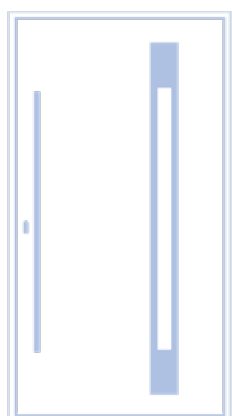
The energy efficiency of the house starts with the entrance door. By installing a door with a heat-saving HPL filling, with a wide profile and a proper «warm» sill you will get significant savings on energy carriers. Entrance doors with MASKO panels even today meet the energy saving standards that will prevail in the future, so it is a smart investment in your own well-being.

Durability

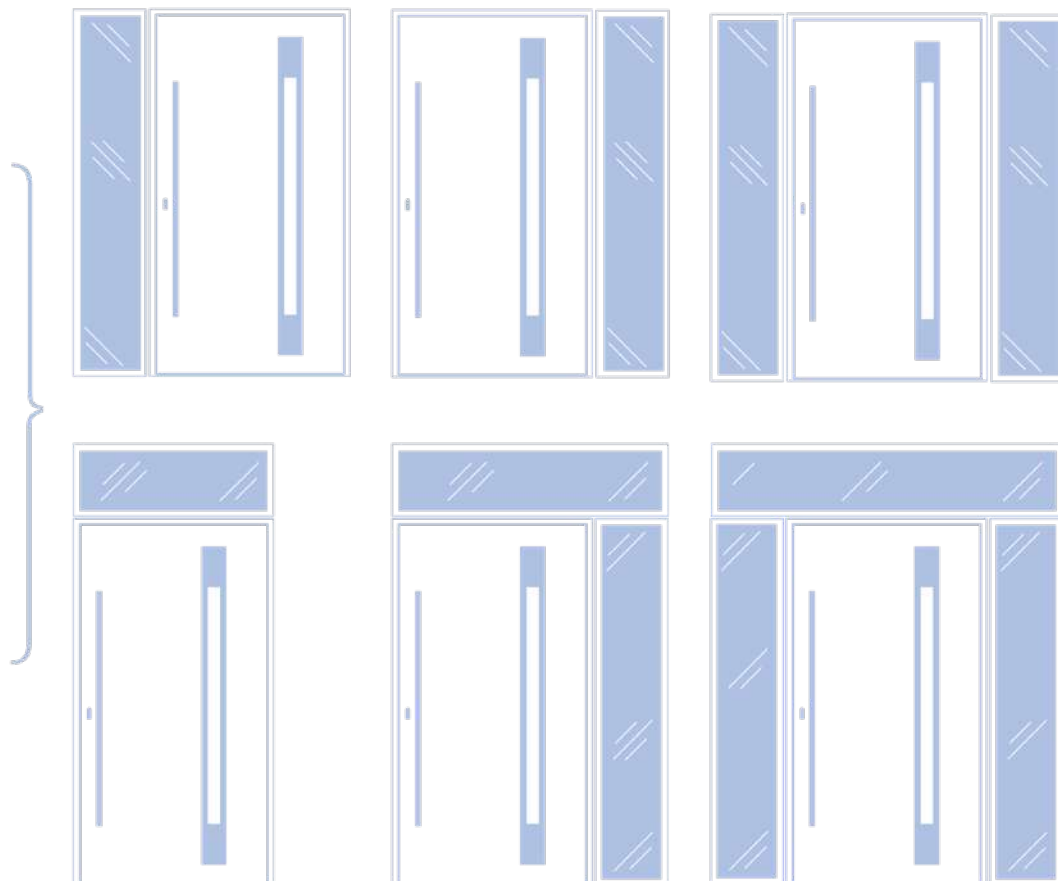
The door filling weighs 4-5 times less than a triple-pane glass unit. The use of the MASKO panel reduces the load on the leaf and hinges and, as a result, increases the durability of the door. The use of the technology of gluing the filling into the leaf ensures improvement of the static indicators of the structure and prevents the possibility of sagging. The outer layer is a heat-resistant HPL panel, so it cannot be deformed.

Design possibilities

Due to the excellent functional qualities, doors with HPL panel filling have a number of advantages for wide use both in the detached houses, as well as in compartment buildings and commercial premises. For facade solutions, a wide range of available sizes may be required. Available combinations with insulated glass unit are shown below. in the free part of the door opening.



Variability of the sizes of the door group is achieved by adding a blind part filled with an insulated glass unit or a panel. The optimal option is chosen based on the architect's requesting.



perfect facade

Doors with filling based on HPL panels not only look perfect from the outside, but they also perfectly solve all their tasks:

- A wide selection of color tones and designs enables making the choice of the door that harmoniously matches any facade.
- Laconic forms make the structure stylish and modern.
- Universal configuration and variety of design solutions make doors with HPL filling an optimal choice for both classic buildings and modern architectural forms.



Design Series: lines

Termo EXCLUSIVE



model L10

equipped with
an office handle
the sample color
is black-brown



model L02



model L07



model L05

a sample viewed from
the side of the room,
with inside opening



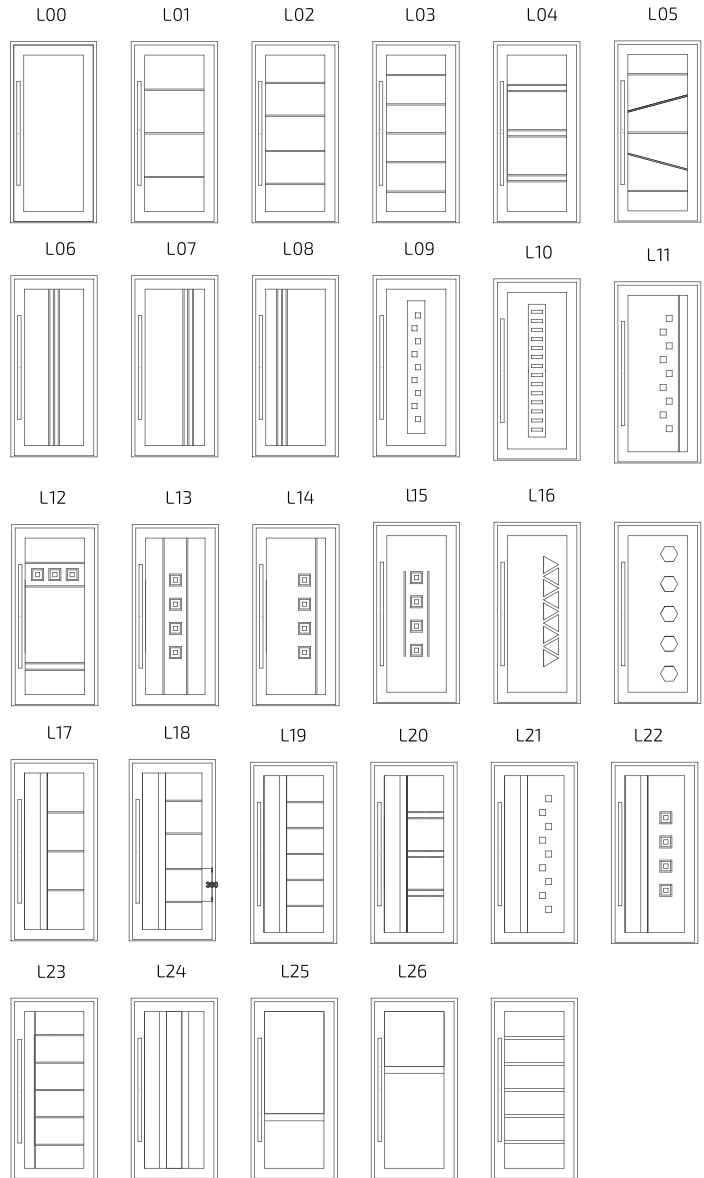
model L18

Design Series: lines

Termo PREMIUM

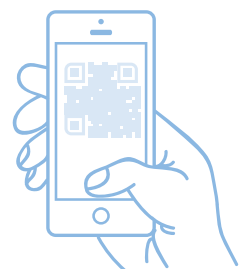


model L04



relevant and available to order models are in the Design Tool via the link.

Scan the QR code and go to





*laconic
design*

Doors with filling based on HPL panels in the design of the Lines series definitely have every chance to become a modern bestseller of our product line!

The solution of perfect appearance is in line with any style of modern interior. And the steel elements on the leaf give a feeling of safety and reliability.

Design Series: vertical

Termo EXCLUSIVE



model V27

equipped with
an office handle
the sample color
is Umbra



model V31



model V33



model V10
this sample
is viewed from the
side of the facade



model V09

Design Series: vertical

TermoCOMFORT

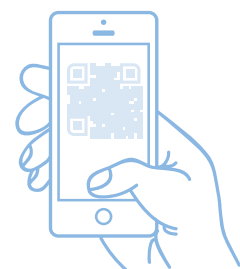
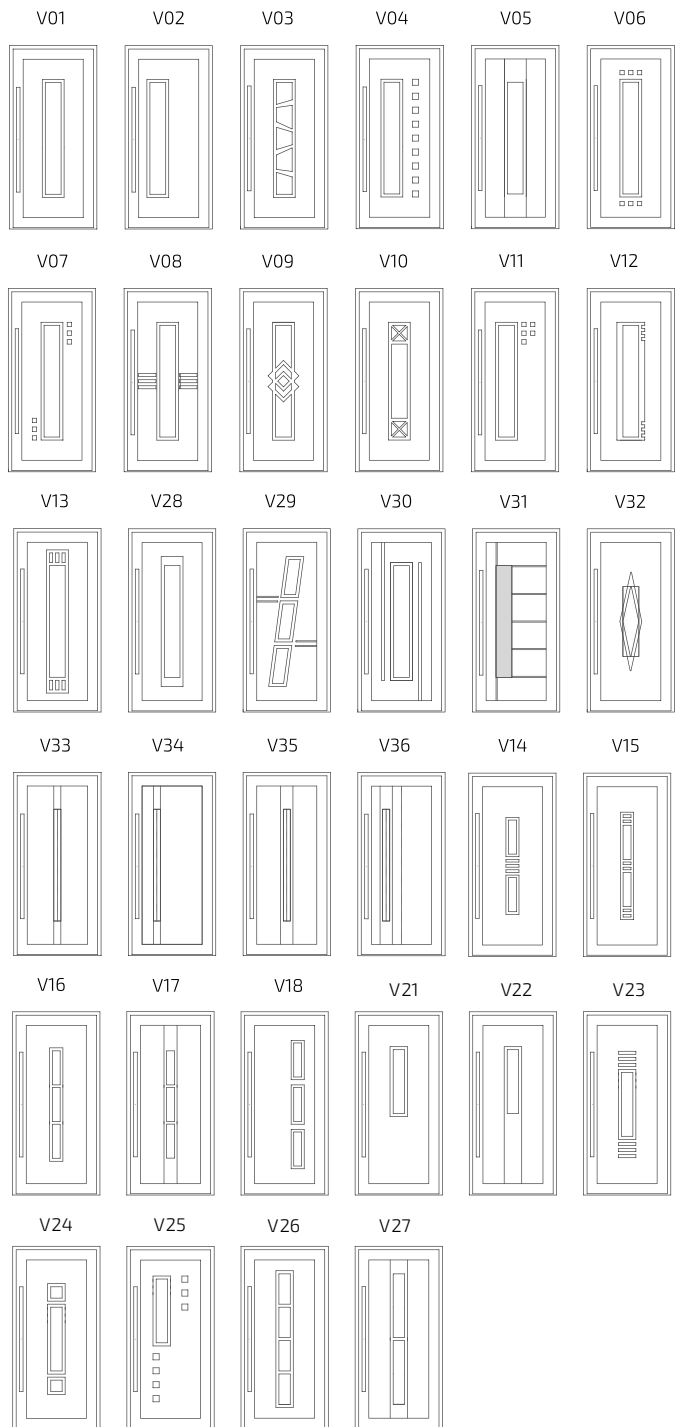


model V12

available with a push handle,
basic configuration

relevant and available to order models
are in the Design Tool via the link.

Scan the QR code and go to



Stylish interior

It is not an easy task to naturally match pvc doors with the interior of a modern building or apartment. To solve the task, doors with filling based on HPL panels will come in handy:

- The appearance of laminated panel is as natural and attractive as possible.
- A wide selection of color tones enables matching the door to any color spectrum.
- As a door design can be chosen among many options, it easily matches with the absolute majority of interior solutions.



Stylish interior

Laconic designs in combination with smooth gray, black or dark chocolate lamination color are the optimal choice for a modern style in the interior.

Natural wood structure is not a specific feature of such colors panels, at that they are very nice on the touch. They are complemented with steel elements and glass inserts



Design Series: horizontal

Termo EXCLUSIVE



model H04

color of the sample
with a smoker's
handle is Basalt



model H01



model H09



model H10
this sample
is viewed from the
side of the facade



model H06

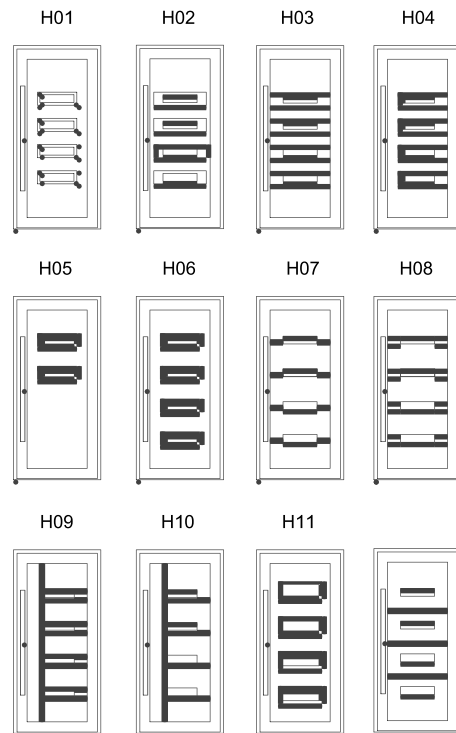
Design Series: horizontal

TermoCOMFORT



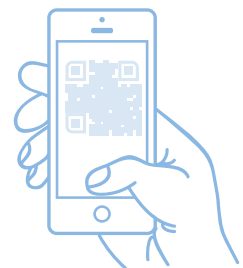
model H03

color of the sample with
a smoker's handle is Basalt



relevant and available to order models
are in the Design Tool via the link.

Scan the QR code and go to



Design Series: radius



model R07

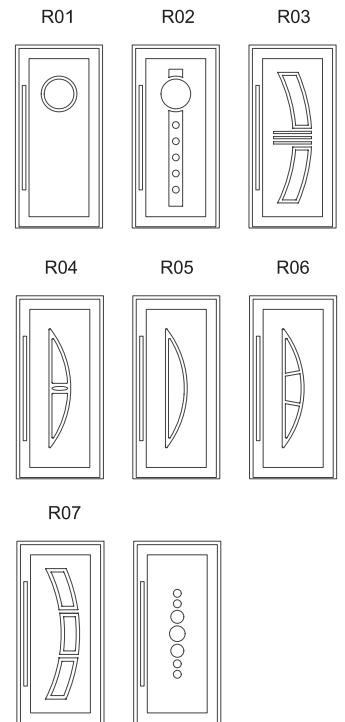


model R01



relevant and available
to order models
are in the Design Tool
via the link.

**Scan the QR code
and go to**



Design Series: square

Termo PREMIUM



модель S25

the sample of Quartz
color is equipped with
a smoker's handle



model S01



model S24



model S19

this sample is viewed from
the side of the facade



model S26

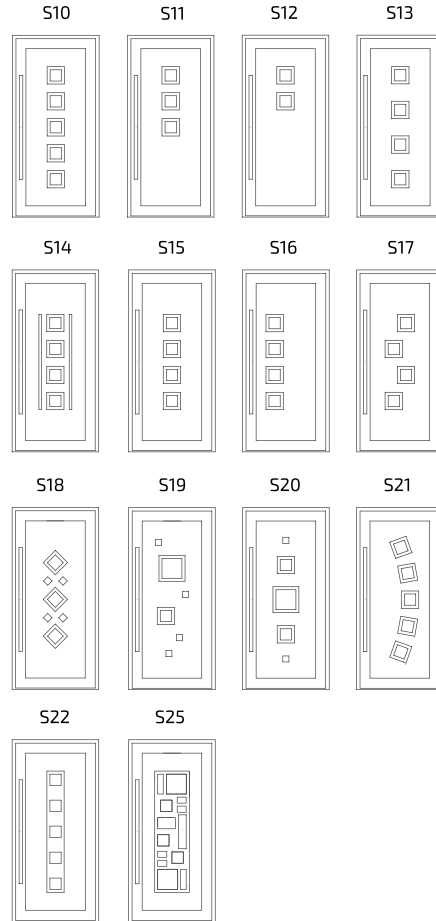
Design Series: square

Termo PREMIUM



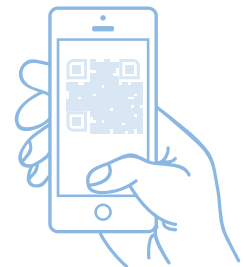
model S20

the sample of Quartz color is equipped with a smoker's handle



relevant and available to order models are in the Design Tool via the link.

Scan the QR code and go to



*classic
series*

Low complexity design styles are natural for modern architecture of detached house construction, but there always a lot of followers of the classics.

The classic country house and the restoration of the fund of historical architecture monuments gives a new rise to the development of door design in this area



Design Series: classic

Termo PREMIUM



model C02



model C05

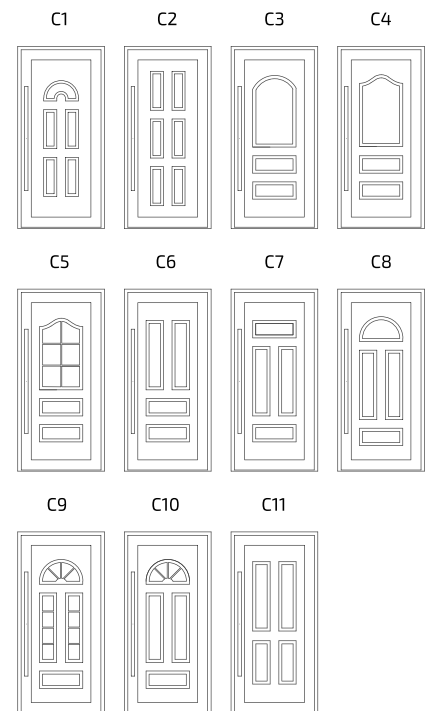


model C09



relevant and available to order models are in the Design Tool via the link.

Scan the QR code and go to

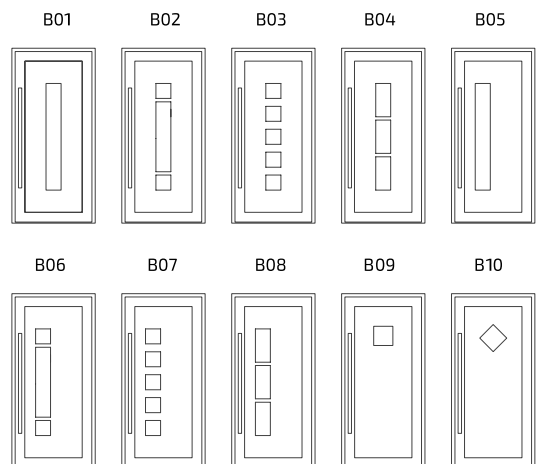
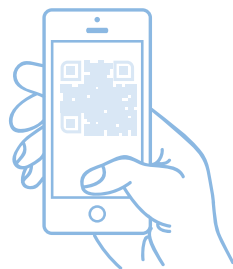


Design Series: basic (without INOX)



relevant and available to order models
are in the Design Tool via the link.

Scan the QR code and go to



Design Series: basic



model B01



model B03



model B02



model B05

*Insulated
glass units
lamination*



Insulated glass units. Lamination options

laminated doors with HPL panels and decorative glass units

Insulated glass units and decorative glass

The technology enables implementing many ideas in the decoration of the door leaf with glass elements (glass units).

There are technologies available:

- **for safety:** tempered glass, triplex in a glass unit.
- **for energy efficiency:** use of Solar glass in double-glazed windows, energy-efficient double-glazed windows with argon
- **for exclusive design:** UV printing, textured glass, sandblasted patterns, insulated glass units made of folded glass.

In fact, it is possible to apply any available technologies to the design of doors filled with HPL panels and the use of an insulated glass unit in the model: decoration design and energy-efficient. Glass applied in the design of the entrance doors group is appropriate for both modern style and classic models.



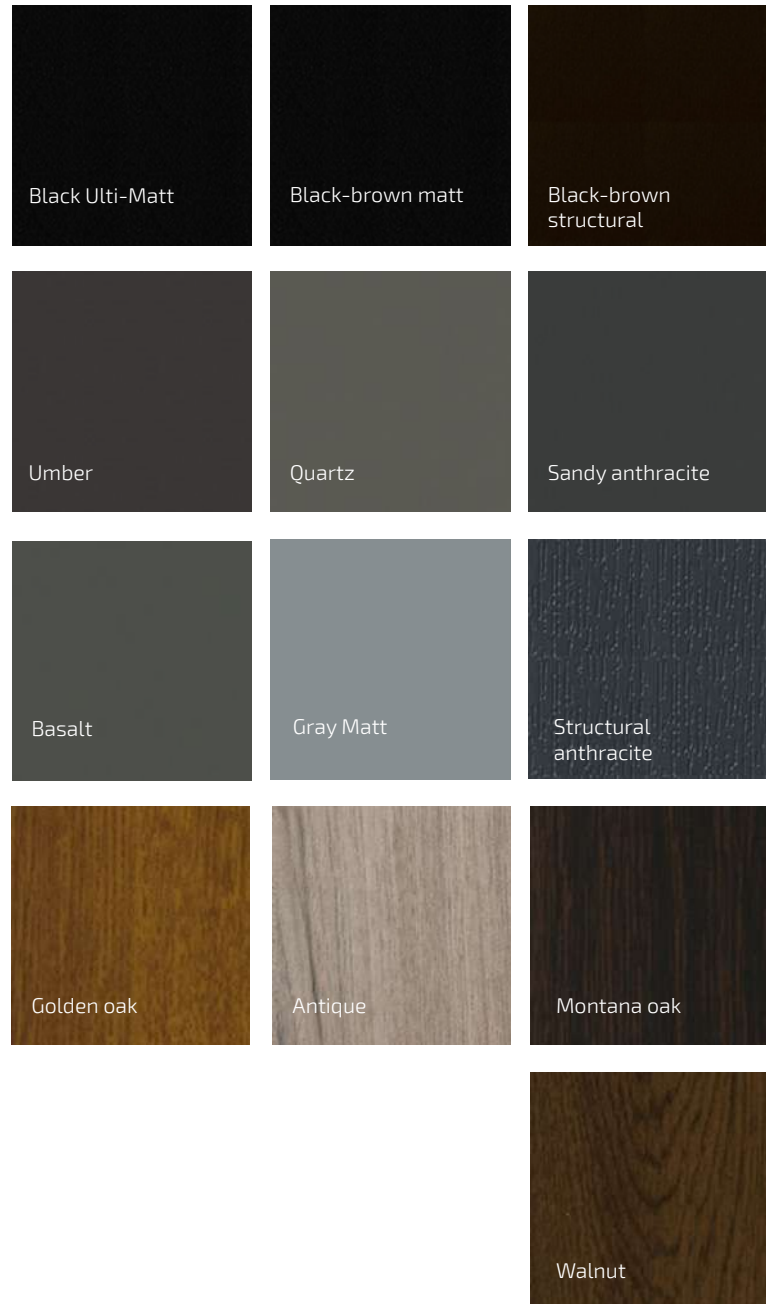
currently available moment decorative types of glass and lamination films are always **online Configurators**



Glass Solar
energy efficiency and beauty in double-glazed doors

Available lamination colors

Doors with HPL panels are available in many relevant lamination colors: natural wood textures and gray palette. The diversity enables finding the optimal design solution, both for a modern interior and for classic facades of cottages.



Easy use



Sill with thermal insert. Door closer

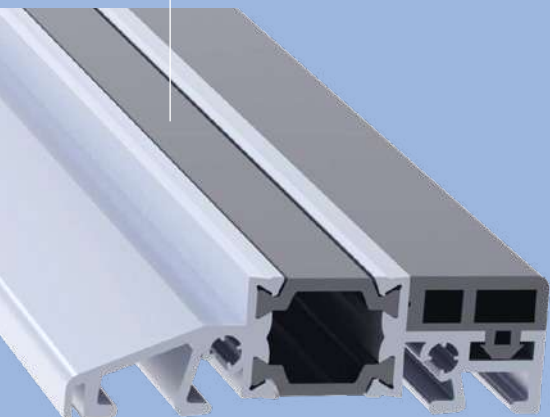
elements add comfort and easy use

Sill with thermal insert

Innovative warm sill with a plastic thermal bridge and rubber. It provides an ideal combination of low thermal conductivity, strength and durability; on these indices, sills with a plastic thermal bridge and rubber are much better than the universal plastic sills.

If necessary, the configuration with a warm high sill of 54 mm or an aluminum sill of 20 mm is possible.

thermal insert that
minimizes heat loss
related to the door
structure



GEZE door closers

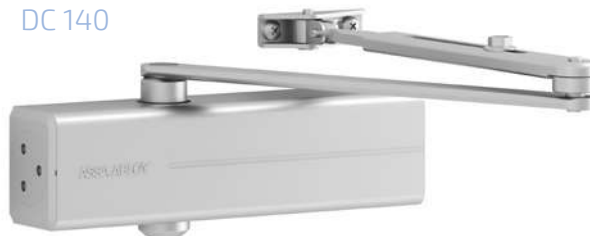
With closers, your entrance door will always be closed. At that, you do not need to close the door yourself. In the event of a fire, the door closer also holds the door in the closed position. Increased operational safety and comfort requirements make it absolutely necessary to have upper-position closers on many doors.

The GEZE Company has a proper solution for any user's needs and demands regarding additional functions of the door. The configuration includes many options and a wide variety of technical and appearance possibilities.

DC 110



DC 140



DC 300



DC 340



DC 700G



Accessories for modern doors

The use of HPL panels as door filling, in any way, does not limit the customer in the choice of hardware mechanism.

The door can be equipped with any modern accessories with high level of safety and ergonomics; and thanks to additional elements, using the door will be even more convenient!

Accessories for up-to-date doors

Winkhaus locks

The configuration of the doors with HPL-panels in the filling includes the installation of anti-burglary locks:

hookLock M2
autoLock AV3
blueMatic EAV3

(the connection of an electric drive and automation systems is possible)

All three locks are designed for the installation of cylinders of standard:

DIN 18252
DIN EN 1303



Specific features of the safety lock of type: **hookLock M2**

The lock with 3 locking points and massive locking rods for the entrance door.

- 3rd class of security suitable for installation in anti-burglary designs of classes WK2 — WK3 (DIN EN 1627-30)
- 2 massive locking rods made of hardened steel with chrome coating
- the locking rods are activated by turning the key in the cylinder twice, they cannot be pressed down by one or both - the door opens only after turning the key
- the lock cassette is closed from all its sides
- corresponding bars with a built-in pressure adjustment function and additional fixation with a latch in the frame. In the closed position, the latch presses the bar against the frame and prevents it from being pulled out

Specific features of the safety lock of type: **autoLock AV3**

The lock of autoLock AV3 type with automatic multi-point locking with latches for entrance doors.

- the lock is equipped with a magnetic sensor on the frame for automatic locking by means of magnetic pulses.
- two strong steel latches are fully inserted into the corresponding bars ensuring a solid contact of the leaf and the frame. The force, while pressing the leaf to the frame is evenly distributed over the entire height of the door
- 3rd anti-burglary class according to DIN 18251-3 (class A in the VdS system)
- AV3 lock sealing elements ensure dynamic contact pressure.
- the lock can be equipped with an electric drive and a switch for day mode (OneTouch function)

Specific features of the safety lock of type: **blueMatic EAV3**

The lock of blueMatic EAV3 type with automatic multi-point locking with latches and the possibility of an electric drive connection for the entrance door.

- the automatic system with multi-point locking is developed according to the principle of the autoLock AV3 mechanical lock. The system is easily unlocked by pressing a button with electric mechanism
- 3rd anti-burglary class according to DIN 18251-3 (class A in the VdS system)
- having massive latches and sealing elements, the lock with an electric drive enables trapping (catching) the bar automatically while closing the door
- after the button is pushed, the latches, sealing elements and the bar are retracted into the lock instantly providing access through the locked door
- locked doors can be easily opened using the remote control or the internal communication system

Accessories for modern doors

hinges, cylinders and smart systems

Door hinges

Configuration of the doors with HPL panels in the filling provides the installation of two types of hinges: surface-mounted or cylindrical



Wala Inox
and
Simonswerk
RB Inox

Simonswerk offers a hinge system with knuckle for PVC entrance doors. The proven technology of the knuckle joint can be used with all common profiles without degrading the integrity of the seal.

The load capacity of up to 120 kg, convenient 3D adjustment, fast and efficient installation, are among the advantages provided by the new hinge system.

Electronic smart systems. Your fingerprint is the key.



Fingerprint scanner

The built-in fingerprint scanner is much more convenient than traditional buttons. The control module is placed inside the door leaf without protruding outward.

Easy. You can open the door simply with one finger and you decide who will get access.

Convenient. Your «key» is always with you. Intelligent software adapts to your changing habits and even to the growth of your children's fingers.

Precise. A standard key can be stolen and lost. Fingerprints are unique and cannot be duplicated.

The scanner is programmed using a smartphone or tablet (iOS/Android). Bluetooth is used for connection. An intruder simply will not be able to intercept the signal or reprogram the scanner from the outside.



Coded access

The ekey home integra keyboard can be installed directly on the door leaf or on the wall next to the door. The control unit is mounted as invisible; only an ultra-flat panel remains visible.

The system is compatible with the absolute majority of models of electronic locks. The encrypted signal is transmitted via the cable to an electronic relay that activates the drive to open the lock. This design excludes the possibility of manipulating the drive from the outside.

The unlock code may contain from 4 to 10 digits. Up to 99 codes can be entered into the memory, so each user can have a unique access code. You can edit the list of codes quickly, and it is possible to add and delete codes of individual users.

Winkhaus cylinders



The standard cylinder is protected against attempts to open with lockpicking and drilling out. With such design, the fixing from both sides is possible. And this means that even when the key in the lock is from one side of the door, the door can be opened with the key from the other side



The cylinder with a high level of protection is equipped with a 3D pin system. It is also protected against drilling out. Additional protection is provided by means of a personal security card. The key can be fixed from both sides, and its symmetrical design makes it easier to open and close the door.

Doors with HPL panels in the filling can be equipped with various types of anti-burglary locks from **Winkhaus**: hookLock M2, autoLock AV3, blueMatic EAV3 (see more details about each lock on page 32).

Additional component parts and possibilities of configuration with cylinders and handles are given in the table:

		hookLock M2	autoLock AV3	blueMatic EAV3
Mechanical cylinders	keyTec X-tra	+	+	+
	keyTec N-tra	+	+	+
	keyOne X-pert	+	+	+
Additional component parts	central locking rod contactor	+	+	+
	door hinge security pins	+	+	+
	caniniform hook contactor		+	+
	«Day-Night» system		+	+
	Fingerprint scanner		+	+
	Access control sensors	+	+	+
Door handles standard equipment	DUBLIN 35	+	+	+
	Medos Dublin 35 «smoker's handle»		+	+
Office handles standard equipment	SS model	+	+	+
	PR model	+	+	+
Designer handles	to order			
handles with electronics	to order			

Accessories for modern doors

entrance door handles

The standard configuration of doors with HPL-panels in the filling provides the installation of push-type and office-type handles:

Medos Dublin 35 Medos office handle

but the choice is not limited to standard options. Any handles listed in the catalog are available to order.



модель SS
diameter 30 mm

Available sizes:
500 mm
800 mm
1000 mm
1400 mm
1800 mm

Office handles, available sizes:

to clarify the configuration of doors with office handles, please contact the sales manager and agree on the size



модель PR
diameter 30 mm

Available sizes:
500 mm
800 mm
1000 mm
1400 mm
1800 mm

Designer handles to order

New vision of your living space



model S24

Important information!
to equip doors with such office handles, please contact your sales manager

Designer handles to order



Designer handles to order

model M1100 Z



model DQS 2



Handles with electronics to order



Important information!

to equip doors with such
office handles, please
contact your sales
manager

Not all handles and other accessories are available in the catalog to order. Please address a sales manager for the available models and accessories options for doors with HPL panels in the filling.



*Quality is
first and
foremost!*

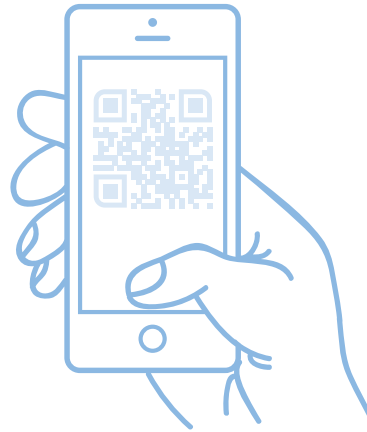
Only subject to meeting the requirements of the production technology, the doors with HPL-filling will have all its advantages, such as impeccable appearance, high strength, resistance to attempts of break-ins and vandalism, etc.

When dealing with HPL panels:

- We use state-of-the-art equipment with a high degree of automation minimizing the influence of the human factor.
- We use innovative technologies that enable improving the quality of door assembly, including reducing the thickness of welds to a minimum.
- We carefully monitor the quality of premium products — both at the key production stages and before shipping to the customer.

The use of European standards of modern conveyor production enables making really impeccable doors with a guarantee that confirms their quality and reliability.

Interactive Door Configuration Manager



Scan and follow the link to the Configuration **Manager for Doors with MASKO** panels. The catalog demonstrates only a part of the available models and door filling options.

We are moving ahead! We work and update data taking into account market challenges and global trends. We make changes and expand opportunities.

In the Configuration Manager, you can learn all the news and developments regarding MASKO panels. It is practical and forward-thinking.



VIKONDA
windows and doors

**New vision
of your living
space**

[vikonda.com](https://www.vikonda.com)