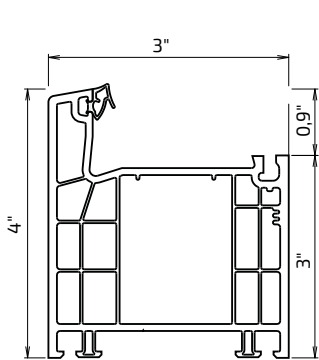
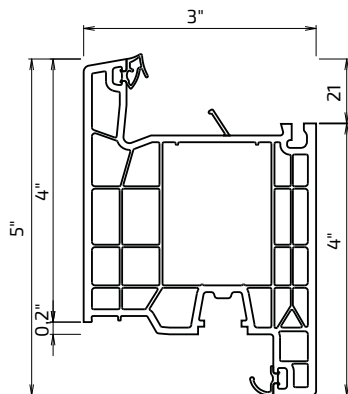


Kömmerling® profile system

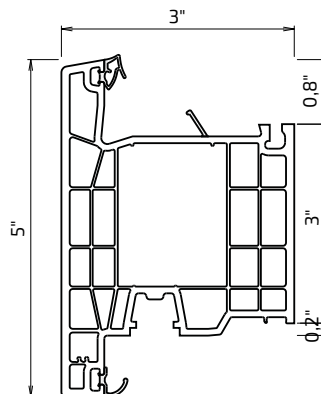
# Kömmerling 76 doors



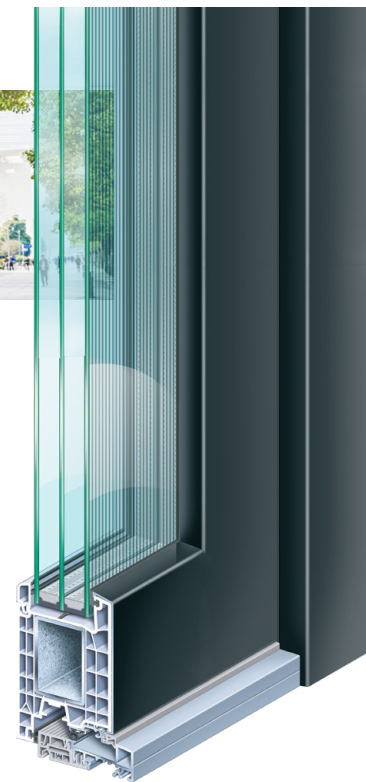
frame



sash internal opening



sash outer opening



The Kömmerling® 76 profile system is suitable for heavy daily use. The doors have excellent values for strength, safety and air-tightness

chambers	mounting width	thickness of insulating glass unit
<b>5</b>	<b>76 mm</b>	<b>16-50 mm</b>
thermal conductivity Uf	sound insulation	air permeability
<b>1,0 W/ (m²K)</b>	<b>47 dB</b>	<b>4 class</b>
wind loads resistance	water tightness	safety class
<b>up to C5/B5</b>	<b>up to 9A</b>	<b>up to RC2 (WK2)</b>

## Profile system advantages

The Kömmerling® 76 door profile is ideal for the production of entrance doors. In developing the profile, engineers were able to create a unique combination of low weight, high stiffness and load resistance as well as excellent energy efficiency.

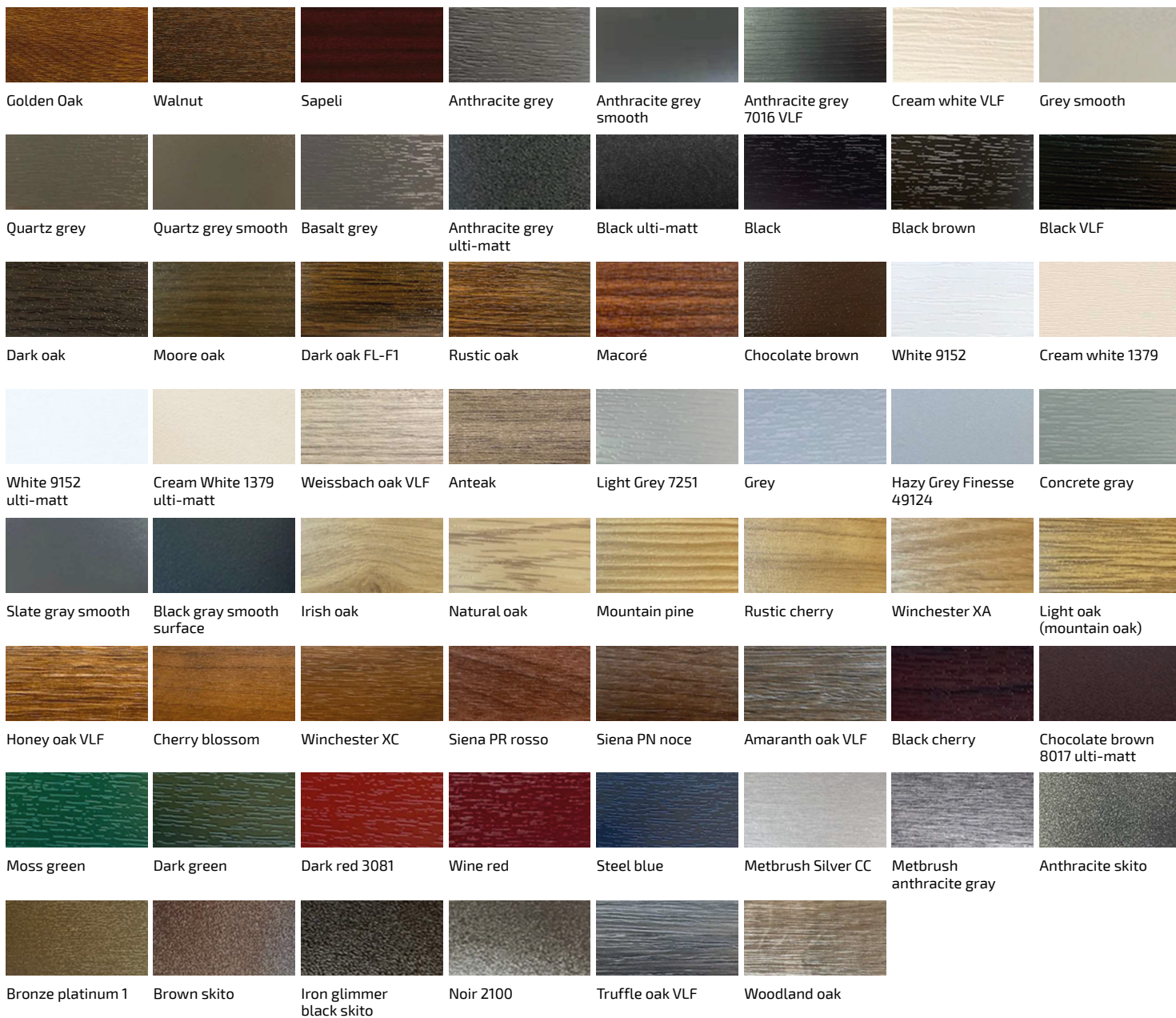
At the same time, the perfectly smooth surface of the door profiles provides the structure with a stylish and modern appearance — and the doors themselves can be modified by installing HPL panels

Kömmerling 76 doors

# Color palette

decorative  
tape RENOLIT  
EXOFOL PX

## the color of lamination



## the color of sealing strip



Black

## the color of the structure body



White

Dark brown

Anthracite